

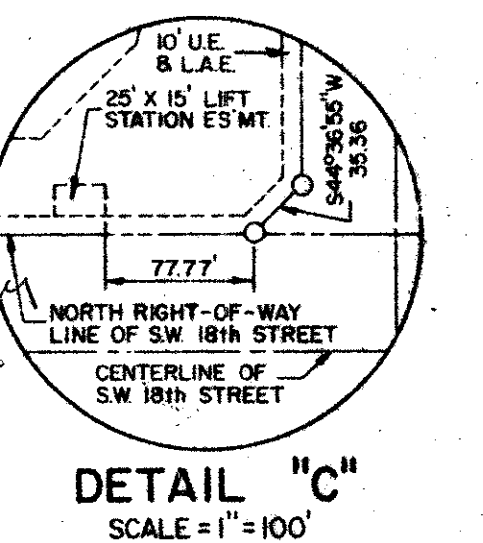
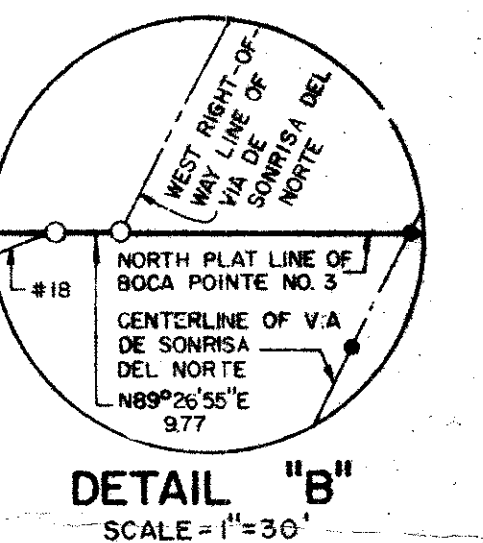
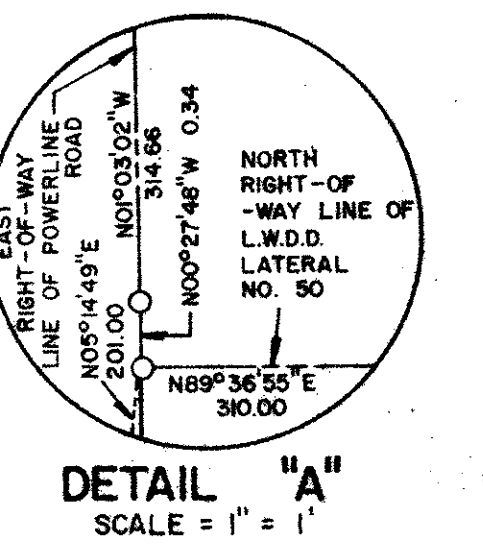
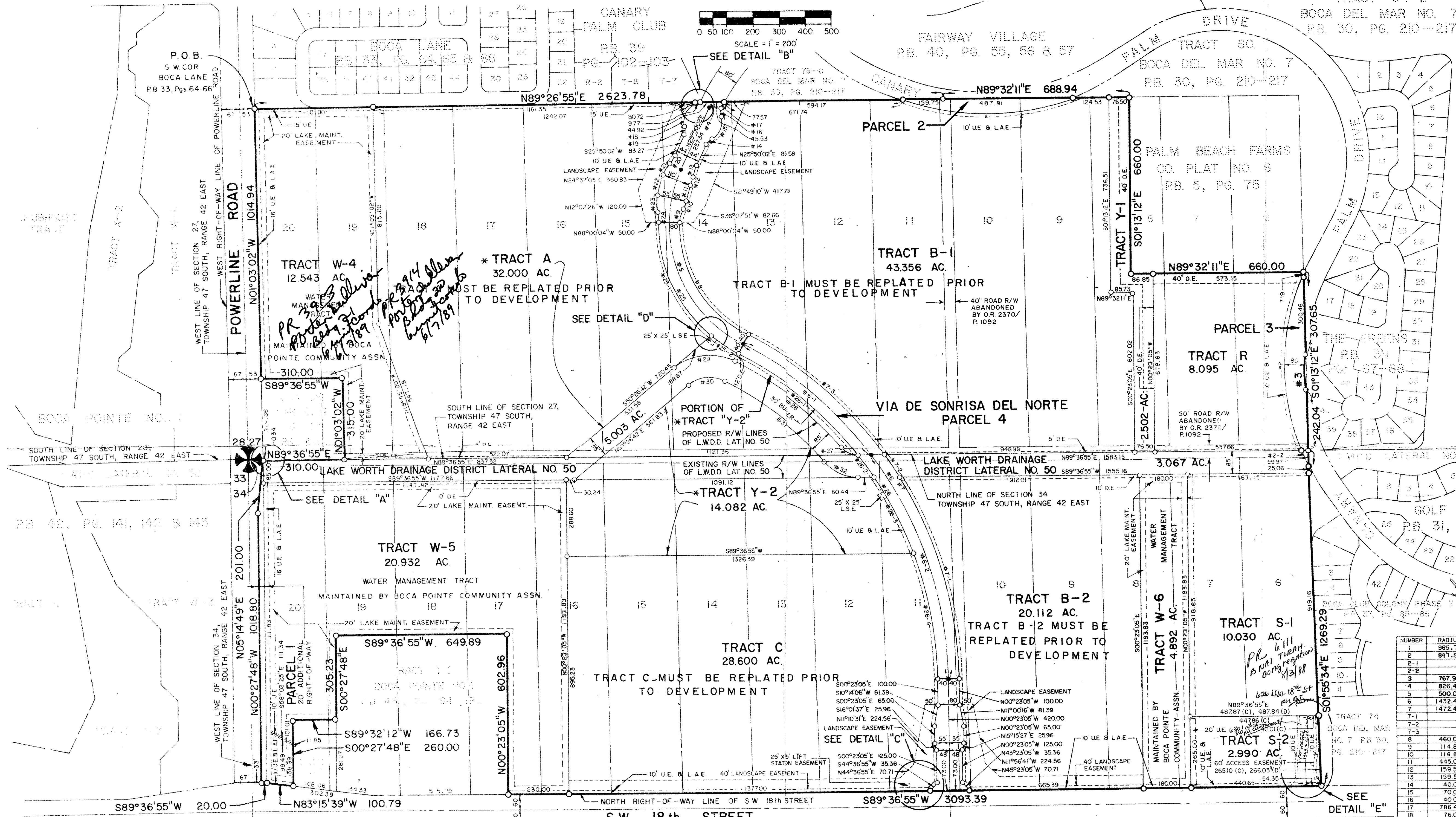
46/125

BOCA POINTE NO. 3

A PLAT OF A PORTION OF SECTIONS 27 AND 34, TOWNSHIP 47 SOUTH, RANGE 42 EAST A REPLAT OF A PORTION OF PALM BEACH FARMS COMPANY PLAT NO. 6 AS RECORDED IN PLAT BOOK 5, PAGE 75 OF THE PUBLIC RECORDS OF PALM BEACH COUNTY, FLORIDA

JOHN A. GRANT, JR., INC. CONSULTING ENGINEERS AND LAND SURVEYORS BOCA RATON, FLORIDA

JULY 1983 SHEET 3 OF 3



CURVE TABLE

NUMBER	RADIUS	ARC	DELTA	TAN	CHORD	CHORD BRNG
1	985.70	659.98	038°21'32"	342.86	641.66	N89°20'53.0"E
2	847.35	757.18	051°09'29"	405.92	732.27	S01°12'40.5"E
2-1	631.40	046°42'51"	366.22	672.41	S00°56'38.5"E	
2-2	65.78	004°28'38"	32.80	68.78	S84°38'08.0"E	
3	767.99	129.95	009°41'43"	65.15	129.80	N01°15'12.0"W
4	826.40	19.96	001°23'03"	9.98	19.98	N28°51'33.0"E
5	500.00	774.30	069°48'41"	489.02	899.21	N19°31'48.5"E
6	1432.40	1562.74	062°30'34"	869.36	1486.38	N3°38'22.0"W
7	1472.40	1606.38	062°30'34"	893.63	1527.88	N3°38'22.0"W
7-1	803.05	031°14'58"	411.78	793.14	N16°00'34.0"E	
7-2	50.84	101.64	003°57'18"	50.84	101.64	N16°00'34.0"E
7-3	701.69	027°18'18"	357.64	695.07	N48°14'30.0"E	
8	460.00	520.99	064°53'35"	292.45	493.59	N30°26'51.5"W
9	114.85	53.70	026°47'28"	27.35	53.21	N15°23'40.0"E
10	114.85	32.34	016°08'03"	16.28	32.23	N02°43'22.5"E
11	445.00	62.30	008°01'17"	31.20	62.25	N16°39'59.5"E
12	159.58	32.13	011°32'11"	16.12	32.08	N14°54'32.5"E
13	159.58	46.49	016°41'35"	23.41	46.33	N17°29'14.5"E
14	40.00	29.72	042°34'39"	15.59	29.05	N47°07'21.5"E
15	40.00	107.49	087°59'02"	67.58	97.24	N24°25'08.5"E
16	40.00	32.68	046°48'52"	17.32	31.78	N03°50'02.0"E
17	786.40	20.90	001°31'21"	10.45	20.90	N28°00'08.5"E
18	76.00	117.38	088°29'41"	74.09	106.06	S28°40'17.5"E
19	40.00	28.91	041°24'35"	15.12	28.29	S06°07'44.5"E
20	148.29	37.34	014°25'57"	18.77	37.24	S33°02'50.5"E
21	148.29	50.69	019°35'01"	25.59	50.44	S30°28'08.5"E
22	555.00	77.70	008°01'17"	38.91	77.64	S16°39'59.5"E
23	162.31	66.81	023°35'03"	33.88	66.34	S00°57'49.5"E
24	183.31	36.62	012°59'30"	18.39	36.54	S04°07'33.0"E
25	540.00	611.60	064°53'35"	343.31	579.43	S30°26'51.5"E
25-1	488.53	051°50'04"	262.41	472.04	N23°55'06.0"W	
25-2	123.07	013°03'31"	61.81	122.81	N56°21'53.5"W	
26	1392.40	1519.10	062°30'34"	845.08	1444.86	S31°38'22.0"E
26-1	606.28	024°46'52"	308.02	601.50	N50°22'13.0"E	
26-2	104.32	004°17'34"	52.18	104.28	N35°48'00.0"E	
26-3	323.53	013°18'46"	162.49	322.79	N28°59'59.5"E	
26-4	404.97	019°57'22"	244.97	482.52	N10°21'46.0"E	
27	80.46	78.08	049°54'17"	37.44	67.88	N65°25'56.5"E
28	134.40	332.97	022°40'51"	69.94	325.53	N59°41'17.5"E
29	214.38	249.42	066°39'39"	140.99	235.59	S83°46'31.5"E
30	129.38	150.53	066°39'39"	85.09	142.18	N83°46'31.5"E
31	1277.40	499.72	022°45'11"	253.10	486.53	S51°41'13.5"E
32	165.46	144.12	049°54'17"	76.99	139.60	S65°25'56.5"E
33	1432.40	654.21	026°10'06"	332.91	648.54	N49°48'36.0"E
6-2	1432.40	508.53	036°20'28"	470.13	893.38	N18°31'19.0"W

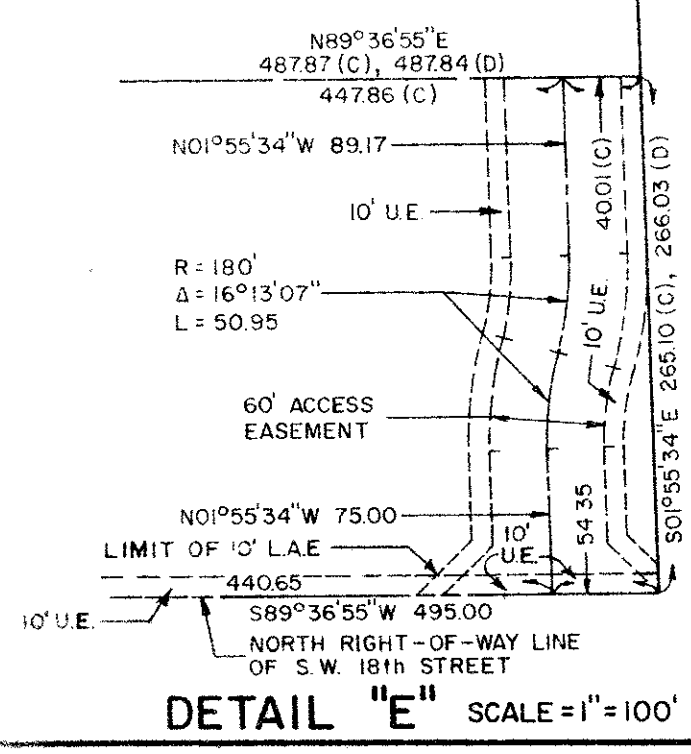
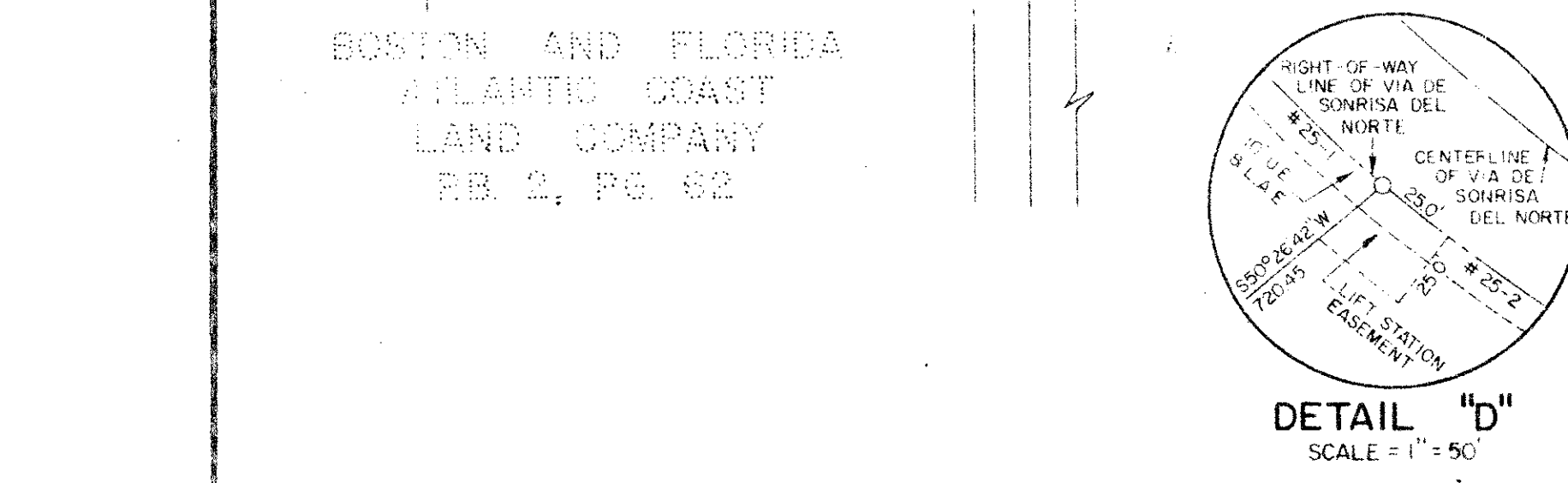
NOTES:

- No structures, trees or shrubs shall be placed on drainage easements.
- Approval of landscaping on utility easements, other than water and sewer, shall be only with the approval of all utilities occupying same.
- Bearings shown hereon are based on a bearing of N.01°03'02"W along the East right-of-way line of Powerline Road, as shown on the record plat of Boca Pointe No. 1 as recorded in Plat Book 42, Pages 141 - 143 of the public records of Palm Beach County, Florida.
- Tracts A, B-1, B-2, B, C must be replatted prior to development.
- Palm Beach Farms Co., Plat 6 was abandoned, as required, under ORB 2370, Pg 1092.
- No buildings or any kind of construction shall be placed on utility or drainage easements.

0211-304

46/125

BOCA POINTE #3



BOCA POINTE NO. 4
PB. 42, PG. 194, 195 & 196

NOTE:
* AREA COMPUTED TO PROPOSED R/W LINES OF LAKE WORTH DRAINAGE DISTRICT LATERAL NO. 50.

This instrument was prepared by:
John A. Grant, Jr., John A. Grant, Jr., Inc.
3333 North Federal Highway, Boca Raton, Florida 33431